

◆ Product list

Resolution	Number of effective pixels	fps	Lens mount	Interface	Model name
0.3M	640 x 480	122.3	NF / M10.5	PoCL-Lite	ID03M-CLL
0.3M	640 x 480	480	C	Camera Link	ID03M-CL
1.2M	1284 x 962	54	M12 / M10.5	USB / Camera Link	ID1M-UCL
1.2M x 2	2568 x 962	54	M12 / M10.5	USB / Camera Link	ID1Mx2-UCL
2M	2048 x 1088	280	C	Camera Link (PoCL)	ID2M-CL
2M(NIR)	2048 x 1088	280	C	Camera Link (PoCL)	ID2M-CLIR
2M	2048 x 1088	340	C	Camera Link (PoCL) Deca	ID2M-CLD
2M(NIR)	2048 x 1088	340	C	Camera Link (PoCL) Deca	ID2M-CLDIR
3M	2064 x 1544	56.6	C	Camera Link	ID3M-CL
4M	2048 x 2048	150	C	Camera Link (PoCL)	ID4M-CL
4M(NIR)	2048 x 2048	150	C	Camera Link (PoCL)	ID4M-CLIR
4M	2048 x 2048	180	C	Camera Link (PoCL) Deca	ID4M-CLD
4M(NIR)	2048 x 2048	180	C	Camera Link (PoCL) Deca	ID4M-CLDIR
4M(UV)	2048 x 2048	54.2	M42(F)	Camera Link	ID4MUV/TVISB-CL
4M(UV)	2048 x 2048	52	M42(C)	Camera Link	ID4MUVG-CL
4M(UV)	2048 x 2048	57.1	M42(F)	Opt-C:Link	ID4MUV/TVISB-OPT
4M(UV)	2048 x 2048	52	M42(C)	Opt-C:Link	ID4MUVG-OPT
5M	2464 x 2056	35.6	C	Camera Link	ID5M-CL
5M	2464 x 2056	35.7	C	Camera Link	ID5M-OPT
12M	4096 x 3072	42	M42(F)	Camera Link	ID12M-CL
12M	4096 x 3072	93.6	M42(F)	Opt-C:Link	ID12M-OPT
25M	5120 x 5120	22.6	M42(C)	Camera Link	ID25M-CL
48M	7920 x 6004	12.8	M58(F)	Camera Link	ID50M-CL
48M	7920 x 6004	25	M58(F)	Opt-C:Link	ID50M-OPT
65M	9344 x 7000	9.4	M42(F)	Camera Link	ID65M-CL

The specification is subject to change without any prior notice.



# Product catalog

**iDule** iDule Corporation

4F T.NK Bldg, 2-17-2, Gyotoku-Ekimaie,  
 Ichikawa-shi, Chiba-ken, Zip 272-0133, Japan  
 TEL : 047-306-7155 ULR : www.idule.jp

August 2019

## ◆ Corporate Overview

Company Name : iDule Corporation

Address : 4F T.NK Bldg, 2-17-2, Gyotoku-ekimae,  
Ichikawa-shi, Chiba-ken, Zip 272-0133, JAPAN

Foundation : August, 1 st, 2012

Capital : 31 Million Yen

President : Hisao Kawamura

### ● The Standard Product Line-up

We offer cameras from VGA to 50M pixel with the de facto standard Camera Link™ I/F in the machine vision industry.

Also, there are a series of cameras with Optical I/F specification as high credible high-speed transmission required for higher speed image sensor and are compact Global Shutter cameras optimized for embedded vision systems.

### ● Custom Development / Professional Service

iDule provides customization of our standard products and new design services per customer requirement. Please contact us.

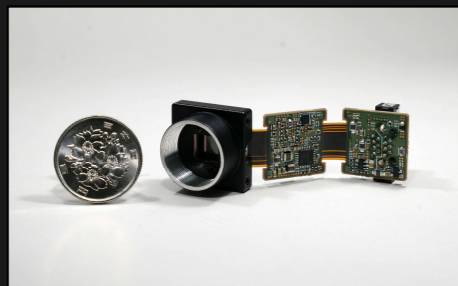


Photo:Down-sized by using rigid flexible board



Photo:Compact design by head-detaching

## Line-up of cameras

	0.3M	1.2M	2M	3M	4M	5M	12M	25M	48M	65M
30fps						ID5M ID5M		ID25M ID25M	ID48M ID48M	ID65M ID65M
60fps		ID1M ID1M		ID3M	ID4M UV ID4M UV		ID12M ID12M			
120fps	ID03M Lite									
240fps					ID4M					
480fps	ID03M		ID2M							

Camera Link I/F

USB I/F

Optical I/F

The specification is subject to change without any prior notice.

## Lens mount



1.2M  
M12

VGA  
NF mount

2M/3M/4M/5M  
C mount

12M/25M/65M  
M42 mount

48M  
M58 mount

## ◆ VGA

Our VGA camera, with AMS(CMOSIS) high-speed VGA sensor, has multiple product choices from board-type to PoCL type. You can select a suitable type according to your requirements such as camera installation space, required frame rate.



ID03M-CLL



ID03M-CL

## ◆ 2Mega Pixel / 4Mega Pixel

The ID2M series are 2 Mega pixel and the ID4M series are 4 Mega pixel in resolution. They use AMS(CMOSIS) high-speed CMOS sensor with Camera Link™ I/F. They are ideal for inspection applications that require a high-speed frame rate.



ID4M-CL



ID4M-CL背面

Model name	ID03MB/C-CLL (Mono/Color)	ID03MB/C-CL (Mono/Color)
Output interface	PoCL-Lite	Camera Link (Base)
Image sensor / Cell size	AMS CMV300 / 7.4μm x 7.4μm	
Image circle	1/3 inch Φ6.003mm	
Number of effective pixels	640(H) x 484(V)	
Output data clock	40MHz	80MHz
Video data output	Mono / Raw color 10bit	Mono or Raw color 8/10bit
Frame rate	122.34fps	Base 2Tap : 480fps
Gain	0 ~ +18dB	0 ~ +12dB
Shutter speed	Off ~ 1/10,000s	Off ~ 1/40,000s
Partial scan	8 area	
Trigger mode	Fixed shutter / Pulse width	
Output data connector	SDR14pin	SDR26pin
Lens mount	NF / M10.5	C
Power input / External trigger	PoCL-Lite connector	Hirose 12pin or PoCL
Power consumption	DC12V max. 1.5W	DC12V max. 2.5W
Dimensions	21.5(H) x 21.5(W) x 21.5(D)mm 19g	29(H) x 29(W) x 43(D)mm 60g

The specification is subject to change without any prior notice.

Model name	ID2MB/C-CL (Mono/Color) ID2MB/C-CLD (10TAP Mono/Color)	ID4MB/C-CL (Mono/Color) ID4MB/C-CLD (10TAP Mono/Color)
Output interface	Camera Link (Base ~ Full / Deca)	
Image sensor / Cell size	AMS CMV2000 / 5.5μm x 5.5μm	AMS CMV4000 / 5.5μm x 5.5μm
Image circle	2/3 inch Φ12.755mm	1 inch Φ15.930mm
Number of effective pixels	2,048(H) x 1,088(V)	2,048(H) x 2,048(V)
Output data clock	80MHz	
Video data output	Mono or Raw color 8/10bit	
Frame rate	Base 2Tap : 70fps / Medium 4Tap : 140fps / Full 8Tap : 280fps	Base 2Tap : 38fps / Medium 4Tap : 75fps / Full 8Tap : 150fps / 10Tap : 180fps
Gain	0 ~ +12dB	
Shutter speed	Off ~ 1/50,000s	
Partial scan	8 area	
Trigger mode	Fixed shutter / Pulse width	
Output data connector	SDR26pin	
Lens mount	C	
Power input / External trigger	PoCL	
Power consumption	DC12V max. 2.5W	
Dimensions	29(H) x 29(W) x 43(D)mm 75g	
	※ NIR Model	

The specification is subject to change without any prior notice.

## ◆ 3Mega Pixel / 5Mega Pixel

The ID3M series are a series of cameras with the Camera Link™ I/F. The ID3M uses 3 Million (3M pixel) SONY Pregius sensor and the ID5M uses that of 5M pixel. The video output is with the 12bit resolution output format.



ID5M-CL



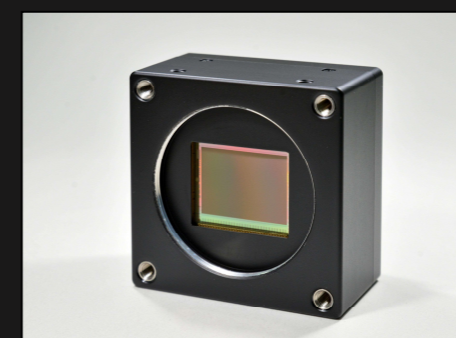
ID5M-CL

Model name	ID3MB/C-CL (Mono/Color)	ID5MB/C-CL (Mono/Color)
Output interface	Camera Link (Base)	
Image sensor / Cell size	SONY IMX265 / 3.45μm x 3.45μm	SONY IMX264 / 3.45μm x 3.45μm
Image circle	1/1.8 inch Φ8.910mm	2/3inch Φ11.090mm
Number of effective pixels	2,064(H) x 1,544(V)	2,464(H) x 2,056(V)
Output data clock	Base 2Tap : 85MHz / 3Tap : 66MHz(8bit only)	
Video data output	Mono or Raw color 8/10/12bit	
Frame rate	Base 2Tap : 51.7fps Base 3Tap : 56.6fps	Base 2Tap : 32.8fps Base 3Tap : 35.6fps
Gain	0 ~ +12dB	
Shutter speed	Off ~ 1/40,000s	Off ~ 1/37,000s
Partial scan	1 area	
Trigger mode	Fixed shutter / Pulse width	
Output data connector	SDR26pin	
Lens mount	C	
Power input / External trigger	Hirose 12pin or PoCL	
Power consumption	DC12V max. 1.8W	
Dimensions	29(H) x 29(D) x 29(W)mm 50g	

The specification is subject to change without any prior notice.

## ◆ 12Mega Pixel / 48Mega Pixel

The ID12M series are a series of cameras of 12 Mega Pixel and the ID50M series are of 50 Mega Pixel with AMS(CMOSIS) high-speed CMOS sensor and the Camera Link™ I/F.



ID12M-CL



ID50M-CL

Model name	ID12MB/C-CL(Mono/Color)	ID50MB/C-CL(Mono/Color)
Output interface	Camera Link (Base ~ Full)	Camera Link Full
Image sensor / Cell size	AMS CMV12000 / 5.5μm x 5.5μm	AMS CMV50000 / 4.6μm x 4.6μm
Image circle	APS-like Φ28.160mm	36.4 x 27.6mm Φ45.717mm
Number of effective pixels	4,096(H) x 3,072(V)	7,920(H) x 6,004(V)
Output data clock	68MHz	80.5MHz
Video data output	Mono or Raw color 8/10bit	
Frame rate	Base 2Tap : 11fps / Medium 4Tap : 22fps Full 8Tap : 42fps	Full 8Tap : 12.8fps
Gain	0 ~ +12dB	
Shutter speed	Off ~ 1/17,000s	Off ~ 1/6,300s
Partial scan	32 area	1 area
Trigger mode	Fixed shutter / Pulse width	
Output data connector	SDR26pin	
Lens mount	M42 P1.0 (*F-mount adaptor)	M58 P0.75 (*F-mount adaptor)
Power input / External trigger	Hirose 12pin or PoCL	
Power consumption	DC12V max. 4.5W	DC12V max. 7.0W
Dimensions	55(H) x 55(D) x 30(W)mm 120g	85(H) x 85(D) x 60(W)mm 500g

The specification is subject to change without any prior notice.

## ◆ 25Mega Pixel

This is a 25-million-pixel camera with GPIXEL's Global Shutter CMOS. It performs a high resolution and it also has a C mount.



ID25M-CL



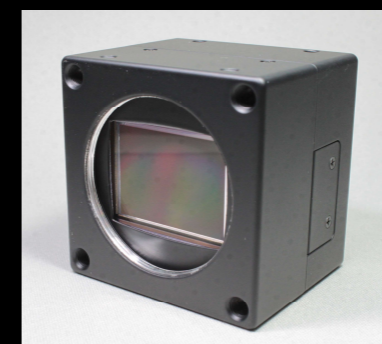
ID25M-CL(C-Mount)

Model name	ID25MB/C-CL (Mono/Color)
Output interface	Camera Link (Base ~ Full)
Image sensor / Cell size	GPIXEL GMAX0505 / 2.5 $\mu$ m x 2.5 $\mu$ m
Image circle	12.8 x 12.8 mm $\Phi$ 18.102mm
Number of effective pixels	5,120(H) x 5,120(V)
Output data clock	79.75MHz
Video data output	Mono or Raw color 8/10/12bit
Frame rate	Base 2Tap : 5.6 fps / Base 3Tap : 7.5 fps / Medium 4Tap : 11.3 fps / Full 8Tap : 22.6 fps
Gain	0 ~ +12dB
Shutter speed	Off ~ 1/40,000s
Partial scan	1 area
Trigger mode	Fixed shutter / Pulse width
Output data connector	SDR26pin
Lens mount	M42 P1.0 (*C-mount / F-mount adaptor)
Power input / External trigger	Hirose 12pin or PoCL
Power consumption	DC12V max. 5.0W
Dimensions	55(H) x 55(D) x 45(W)mm 185 g

仕様は予告なく変更される場合があります。

## ◆ 65Mega Pixel

This is a 65-million-pixel camera with GPIXEL's Global Shutter CMOS. It realized ultra-high resolution with Global Shutter CMOS



ID65M-CL



ID65M-CL背面

Model name	ID65MB/C-CL (Mono/Color)
Output interface	Camera Link (Base ~ Full)
Image sensor / Cell size	GPIXEL GMAX3265 / 3.2 $\mu$ m x 3.2 $\mu$ m
Image circle	29.9 x 22.4 mm $\Phi$ 37.361mm
Number of effective pixels	9,344(H) x 7,000(V)
Output data clock	80MHz
Video data output	Mono or Raw color 8/10/12bit
Frame rate	Base 2Tap : 2.4 fps / Base 3Tap : 3.1 fps / Medium 4Tap : 4.7 fps / Full 8Tap : 9.4 fps
Gain	0 ~ +12dB
Shutter speed	Off ~ 1/25,000s
Partial scan	1 area
Trigger mode	Fixed shutter / Pulse width
Output data connector	SDR26pin
Lens mount	M42 P1.0 (*F-mount adaptor)
Power input / External trigger	Hirose 12pin or PoCL
Power consumption	DC12V max. 6.0W
Dimensions	55(H) x 55(D) x 45(W)mm 185 g

仕様は予告なく変更される場合があります。

## ◆ 1.2Mega Pixel

ID1M series are head-detached compact GS cameras with 1.2M pixel AR135 resolution and M12/M10.5 lens mount. The two types of camera output, USB3.0 and the Camera Link™ I/F, are supported. You may let CCU (Camera Control Unit) host two camera heads synchronized as single frame. This feature is convenient for multi-camera synchronized image capture. A capture board with Base 4ch enables synchronized capture from maximum 8 units of camera.



ID1M-UCL (1 head)



ID1Mx2-UCL (2 head)



ID1M-UCL (Pen)



ID1M-L-UCL (L)



Robot cable (Detachable)



Model name	Normal cable	Robot cable
	ID1MB-UCL (Mono / Pen)	ID1MB-RC-UCL (Mono / Pen)
ID1MC-UCL (Color / Pen)	ID1MC-RC-UCL (Color / Pen)	
ID1MB-L-UCL (Mono / L)	ID1MB-L-RC-UCL (Mono / L)	
ID1MC-L-UCL (Color / L)	ID1MC-L-RC-UCL (Color / L)	
ID1MBx2-UCL (Mono / Pen / 2head)	ID1MBx2-RC-UCL (Mono / Pen / 2head)	
ID1MCx2-UCL (Color / Pen / 2head)	ID1MCx2-RC-UCL (Color / Pen / 2head)	
ID1MB-Lx2-UCL (Mono / L / 2head)	ID1MB-Lx2-RC-UCL (Mono / L / 2head)	
ID1MC-Lx2-UCL (Color / L / 2head)	ID1MC-Lx2-RC-UCL (Color / L / 2head)	

	1 head camera	
Output interface	USB3.0	Camera Link (Base)
Image sensor / Cell size	Onsemi AR0135 / 3.75μm x 3.75μm	
Image circle	1/3 inch Φ6.0mm	
Number of effective pixels	1,284(H) x 962(V)	
Output data clock	74.25MHz	
Video data output	YUV 16bit	Raw 8/10/12bit, RGB24bit
Frame rate	54fps	
Gain	0 ~ +12dB	
Shutter speed	Off ~ 1/54,000s	
Partial scan	1 area	
Trigger mode	Fixed shutter	
Output data connector	USB3.0 Micro B	SDR26pin
Lens mount	M12(*M10.5)	
Power input / External trigger	Hirose 12pin or USB3.0	Hirose 12pin or PoCL
Power consumption	DC12V max. 2.4W	
Dimensions	CHU	Pen : Φ14mm 54(L) mm 7g / L: 10(H) x 14(D) x 65.5(W) mm 2g
	CCU	25(H) x 50(D) x 96(W) mm 110g
		Camera head cable : 2m

The specification is subject to change without any prior notice.

	2 head camera	
Output interface	USB3.0	Camera Link (Base)
Image sensor / Cell size	Onsemi AR0135 / 3.75μm x 3.75μm	
Image circle	1/3 inch Φ6.0mm	
Number of effective pixels	2,568(H) x 962(V)	
Output data clock	74.25MHz	
Video data output	YUV 16bit	Raw 8/10/12bit, RGB24bit
Frame rate	54fps	
Gain	0 ~ +12dB	
Shutter speed	Off ~ 1/54,000s	
Partial scan	1 area	
Trigger mode	Fixed shutter	
Output data connector	USB3.0 Micro B	SDR26pin
Lens mount	M12(*M10.5)	
Power input / External trigger	Hirose 12pin or USB3.0	Hirose 12pin or PoCL
Power consumption	DC12V max. 3.3W	
Dimensions	CHUx2	Pen : Φ14mm 54(L) mm 7g / L: 10(H) x 14(D) x 65.5(W) mm 2g
	CCUx1	25(H) x 50(D) x 96(W) mm 110g
		Camera head cable : 2m

The specification is subject to change without any prior notice.

# DUV(Deep Ultra Violet)

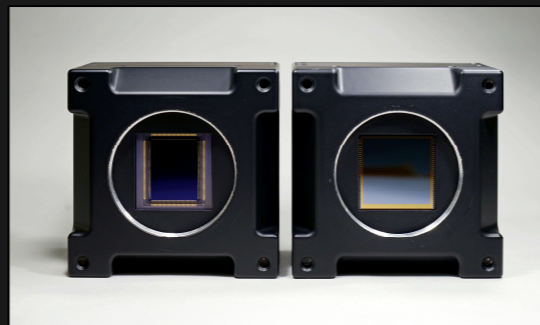


Camera Link

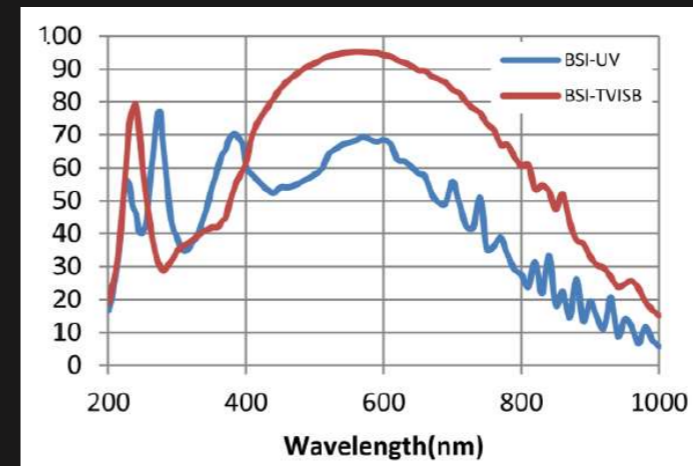


## ◆ 4Mega Pixel UV High Sensitivity

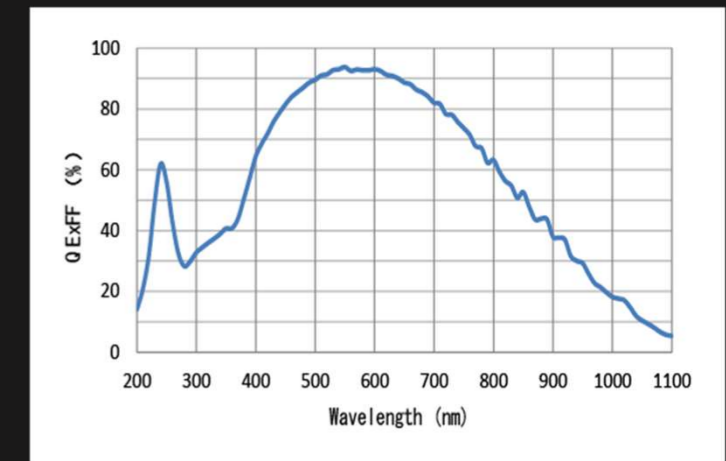
The ID4M UV series are high sensitivity cameras with 4M pixel (11μm,6.5μm) SCMOS sensor. They are ideally high sensitive cameras for a dedicated image processing that requires a sensitivity to ultra violet spectra. A user can choose the most suitable sensor for their purpose among the three sensors; VIS, UV and TVISB.



ID4MUVG-CL / ID4MUV-CL



GSENSE400BSI



GSENSE2020BSI

Model name	ID4MUV-CL / ID4MTVISB-CL	ID4MUVG-CL
Output interface	Camera Link (Base ~ Medium)	
Image sensor / Cell size	Gpixel GSENSE400BSI / 11μm x 11μm	Gpixel GSENSE2020BSI / 6.5μm x 6.5μm
Image circle	Φ31.859mm	Φ18.826mm
Number of effective pixels	2,048(H) x 2,048(V)	
Output data clock	60MHz	52MHz
Video data output	8/10/12bit	8/10/12bit
Frame rate	Base 2Tap : 27.1fps Medium 4Tap : 54.2fps	Base 2Tap : 22.7fps Medium 4Tap : 45.3fps
Gain	0 ~ +24dB	
Shutter speed	Off ~ 1/32,000s	Off ~ 1/130,000s
Partial scan	1 area	
Trigger mode	Fixed shutter / Pulse width	
Output data connector	SDR26pin	
Lens mount	M42 P1.0 (*F-mount adaptor)	
Power input / External trigger	Hirose 12pin or PoCL	
Power consumption	DC12V max. 3.6W	DC12V max. 4.5W
Dimensions	70(H) x 70(D) x 44(W) mm 280g	

The specification is subject to change without any prior notice.

Model name	ID4MUV-OPT / ID4MTVISB-OPT	ID4MUVG-OPT
Output interface	Opt-C:Link 6.25G 1Lane	
Image sensor / Cell size	Gpixel GSENSE400BSI / 11μm x 11μm	Gpixel GSENSE2020BSI / 6.5μm x 6.5μm
Image circle	Φ31.859mm	Φ18.826mm
Number of effective pixels	2,048(H) x 2,048(V)	
Output data clock	60MHz	52MHz
Video data output	8bit (*1)	8bit (*1)
Frame rate	57.1fps	45.3fps
Gain	0 ~ +24dB	
Shutter speed	Off ~ 1/34,000s	Off ~ 1/130,000s
Partial scan	1 area	
Trigger mode	Fixed shutter / Pulse width	
Output data connector	LC-Duplex Multi (cable max : 150m)	
Lens mount	M42 P1.0 (*F-mount adaptor)	
Power input / External trigger	Hirose 12pin	
Power consumption	DC12V max. 3.6W	DC12V max. 5.0W
Dimensions	70(H) x 70(D) x 44(W) mm 280g	

\*1. 12bit出力対応可能。ただし、フレームレートは半分となります。

The specification is subject to change without any prior notice.

## ◆ 5Mega Pixel

Pregius

The ID5M OPT series are optical interface Opt-C:Link cameras using SONY Pregius 5M pixel CMOS sensor. By using the optical interface, stable operation with no image dropout is possible even during long distance transmission and high speed capture.



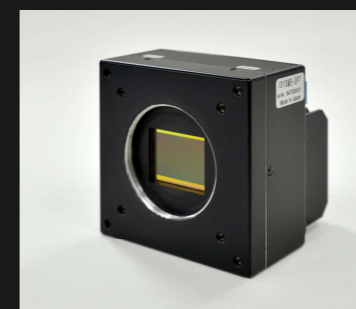
ID5M-OPT



ID5M-OPT背面

## ◆ 12Mega Pixel / 48Mega Pixel

The ID12M and ID50M series are a series of high-speed cameras with AMS(CMOSIS) 12M pixel and 48M pixel CMOS sensor. By introducing an optical interface, you can implement a long-distance transmission and stable operation at high-speed capturing.



ID12M-OPT



ID50M-OPT

Model name	ID5MB/C-OPT (Mono / Color)
Output interface	Opt-C:Link 6.25G 1Lane
Image sensor / Cell size	SONY IMX264 / 3.45μm x 3.45μm
Image circle	2/3 inch Φ11.090mm
Number of effective pixels	2,464(H) x 2,056(V)
Output data clock	61.875MHz
Video data output	Mono or Raw color 8bit
Frame rate	35.7fps
Gain	0 ~ +12dB
Shutter speed	Off ~ 1/75,000s
Partial scan	1 area
Trigger mode	Fixed shutter / Pulse width
Output data connector	LC-Duplex Multi (Cable : max 150m)
Lens mount	C
Power input / External trigger	Hirose 6pin
Power consumption	DC12V max. 4.5W
Dimensions	29(H) x 29(D) x 46.5(W) mm 55g

The specification is subject to change without any prior notice.

Model name	ID12MB/C-OPT(Mono / Color)	ID50MB/C-OPT(Mono / Color)
Output interface	Opt-C:Link 6.25G 2Lane	
Image sensor / Cell size	CMOSIS CMV12000 / 5.5μm x 5.5μm	CMOSIS CMV50000 / 4.6μm x 4.6μm
Image circle	APS-like Φ28.160mm	6.4 x 27.6mm Φ45.717mm
Number of effective pixels	4,096(H) x 3,072(V)	7,920(H) x 6,004(V)
Output data clock	75MHz	78.4MHz
Video data output	Mono or Raw color 8bit	
Frame rate	93.6fps	25fps
Gain	0 ~ +12dB	
Shutter speed	Off ~ 1/36,000s	Off ~ 1/12,000s
Partial scan	32 area	1 area
Trigger mode	Fixed shutter / Pulse width	
Output data connector	LC-Duplex Multi (Cable : max 150m)	
Lens mount	M42 P1.0 (*F-mount adaptor)	M58 P0.75 (*F-mount adaptor)
Power input / External trigger	Hirose 12pin	
Power consumption	DC12V max. 7.5W	DC12V max. 8.0W
Dimensions	70(H) x 70(D) x 38(W) mm 335g	85(H) x 85(D) x 60(W) mm 500g

The specification is subject to change without any prior notice.